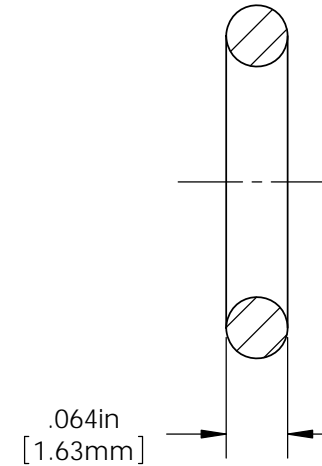
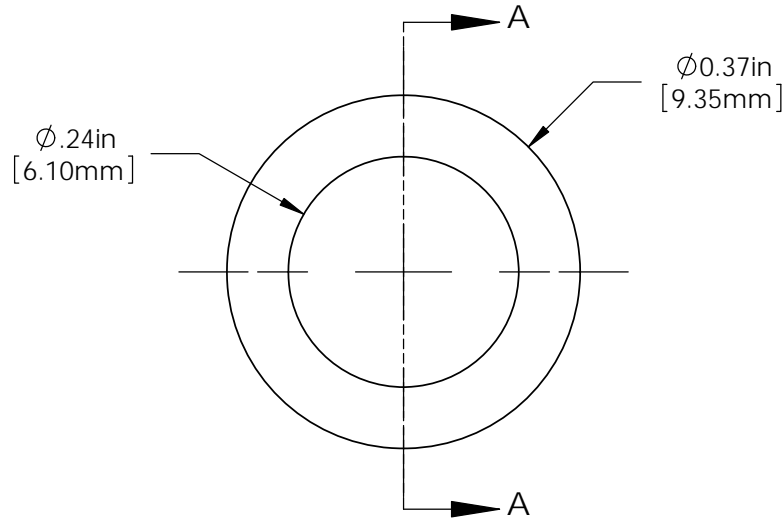


**NOTES:**

1. OPERATING TEMPERATURE: -65°F TO +300°F
2. U.S. & FOREIGN PATENT ISSUED

REVISIONS					
ECN #	REV.	DESCRIPTION	DATE	INITIALS	CHK'D
	N/A	INITIAL RELEASE	7/12/01	JS	N/A
	001	REVISED PER ECR111009AZ01	2/12/10	KH	DPZ

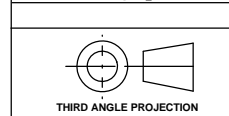


SECTION A-A



ISOMETRIC VIEW

DIMENSION STYLE: INCHES (MM) GENERAL TOLERANCES UNLESS OTHERWISE SPECIFIED		
	INCHES	MM
X	± .020	± .508
.XX	± .010	± .254
.XXX	± .005	± .127
ANGLE ± 1°		



**PROPRIETARY AND CONFIDENTIAL**  
THE INFORMATION CONTAINED IN THIS DRAWING IS THE SOLE PROPERTY OF VISUAL COMMUNICATIONS COMPANY, INC. ANY REPRODUCTION IN PART OR AS A WHOLE WITHOUT THE WRITTEN PERMISSION OF VISUAL COMMUNICATIONS COMPANY, INC IS PROHIBITED.

APPROVAL	DATE
DRAWN KHOWARD	2/12/11
CHECKED DPZ	2/12/11

MATERIAL  
(EPDM) ETHYLENE  
PROPYLENE DIENE RUBBER,  
BLACK

FINISH  
NONE

DO NOT SCALE DRAWING

**VCCG OPTOELECTRONICS**  
190 BOSSTICK BLVD. SUITE 101 SAN MARCOS, CA 92069 U.S.A  
PHONE: (760) 560-1300, FAX: (760) 560-1301 EMAIL: vccsales@vcclite.com

TITLE:  
**LENS SPACER SPC 060**

SIZE <b>A</b>	DWG. NO. SPC 060	REV <b>001</b>
SCALE: 5:1		SHEET 1 OF 1