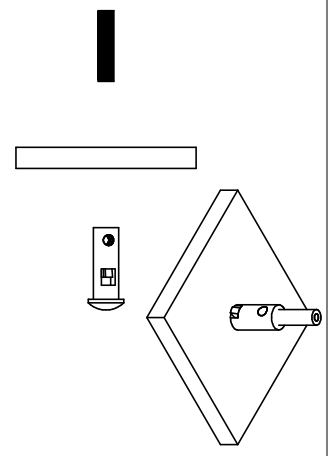
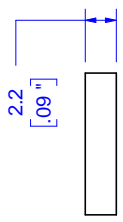


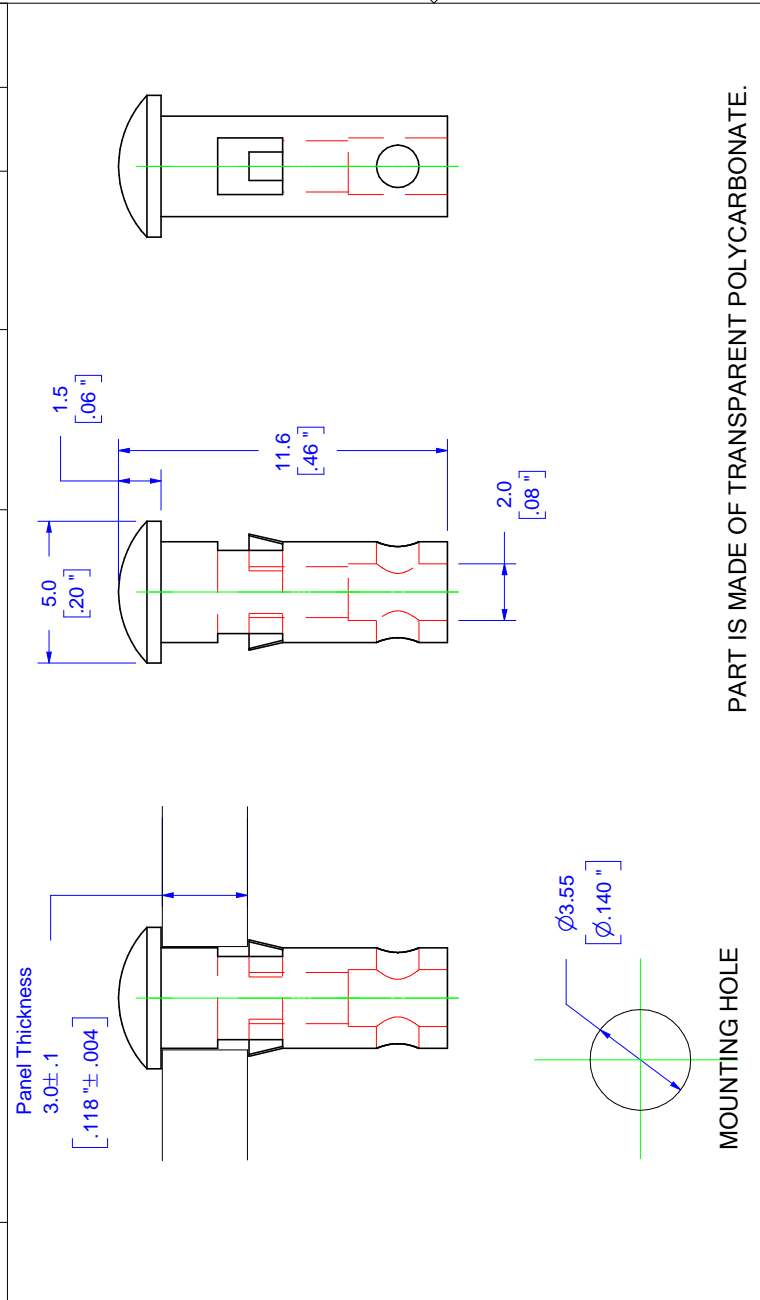
© COPYRIGHT 2010 BY INDUSTRIAL FIBER OPTICS, INC.
ALL RIGHTS RESERVED.

LIGHT PIPE PREPARATION/INSTALLATION:



- NOTES:**
1. ROHS COMPLIANT
 2. UL 94V-2 FLAMMABILITY RATING
 3. -40°C TO 85°C OPERATING TEMPERATURE
 4. SUITABLE FOR LIGHT PIPE WITH $\varnothing 2.2\text{mm}$ JACKET AND OPTICAL CORE NO GREATER THAN $\varnothing 1.5\text{mm}$

REVISIONS				
REV	DESCRIPTION	ECO	DATE	APVD
A	Initial release		11/12/2008	RD
B	Redrew, fixed diameter of mounting hole	0065	2/9/2010	AR



MOUNTING HOLE

PART IS MADE OF TRANSPARENT POLYCARBONATE.

UNLESS OTHERWISE SPECIFIED DIMENSIONS MILLIMETERS [IN.]		PRODUCT	
TOLERANCES		Light Pipe	INDUSTRIAL FIBER OPTICS
0 PLC: ± 1	SURFACE 3.2	Polycarbonate	TEMPE, AZ 85281
1 PLC: $\pm .25$	TEXTURE: \checkmark		
2 PLC: $\pm .127$			
3 PLC: $\pm .025$			
4 PLC: $\pm .013$			
ANGLE: $\pm 1/2^\circ$			
REMOVE BURRS AND SHARP EDGES FLATNESS .005mm PER mm ALL DIMENSIONS AFTER FINISH		FINISH	NAME
		DRAWN BY B. Bidwell	Lens, Light Pipe to Panel
		DATE 2/9/2010	SIZE SCALE
		CHECKED BY A. Reyes	A 4:1
		DATE 2/11/2010	PART NUMBER
			51 0370
			REV B
			DO NOT SCALE DRAWING
			Sheet 1 of 1

METRIC

