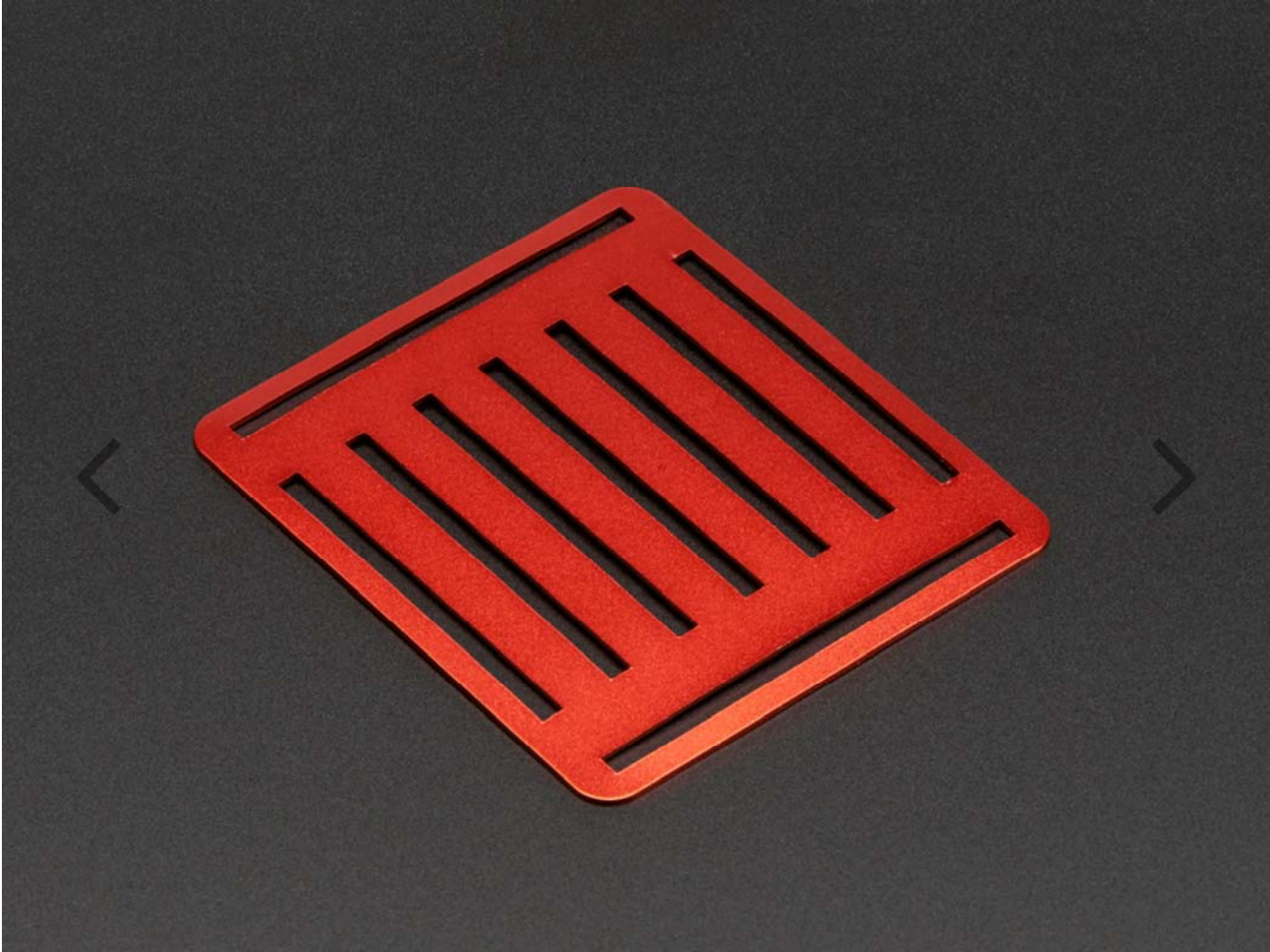


# Top Metal Plate for a Mini Robot Rover Chassis

PRODUCT ID: 2944



---

## DESCRIPTION

---

This is a nice Top Metal Plate as an extra add-on for our nice mini rover chassis. You don't *need* it but it let's you add a little more storage to your bot. Perfect for housing your robot's electronics and batteries underneath. This plate comes with two standoffs and the appropriate screws. Made light (10.3g) and sturdy, it's a great piece for your robot building future!

---

# Technical Details

Dimensions: 70mm x 80mm x 1mm / 2.75" x 3.15" x 0.04"  
Weight: 10.3g