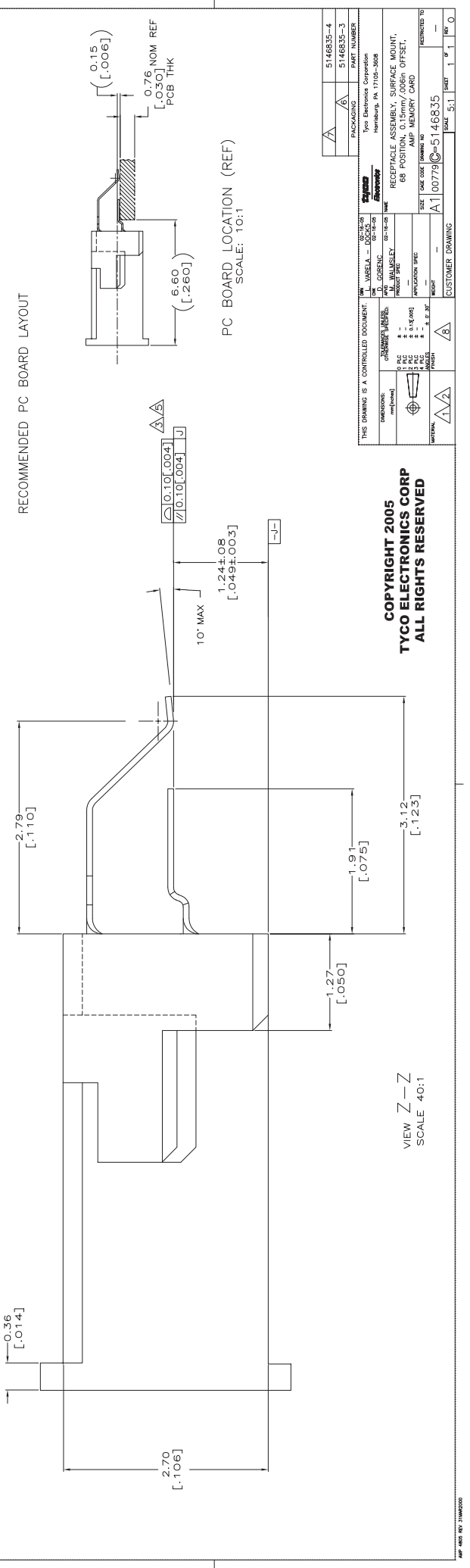
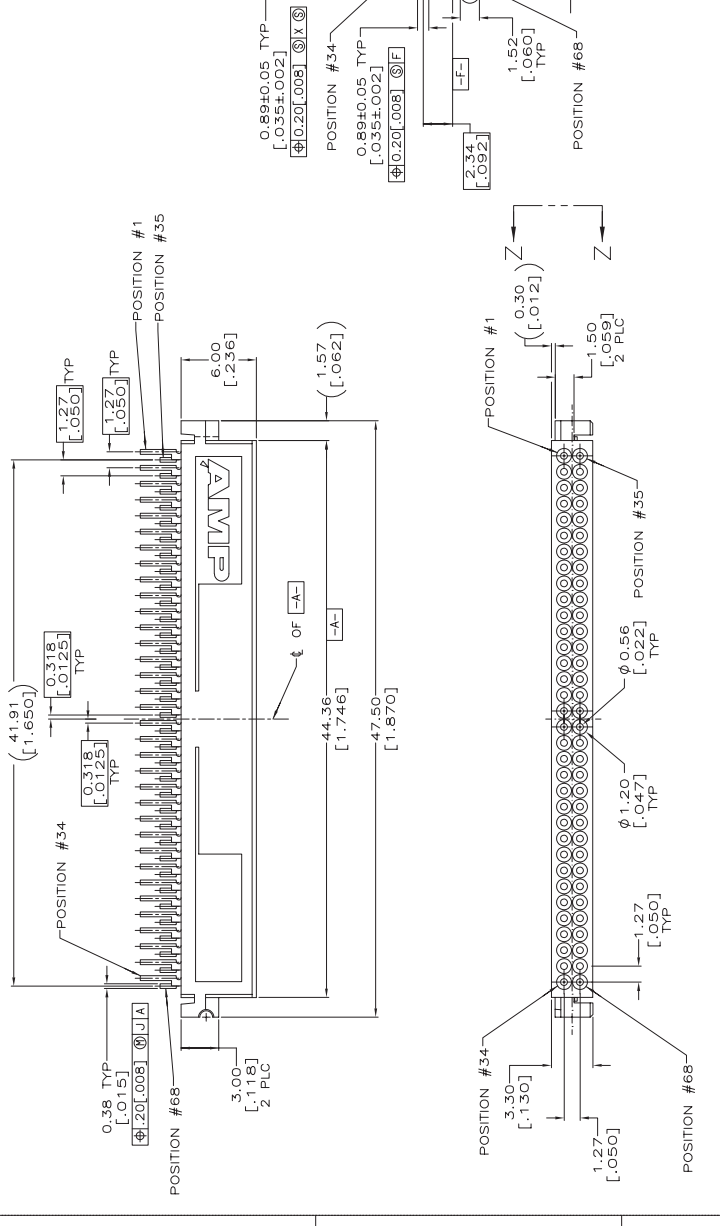
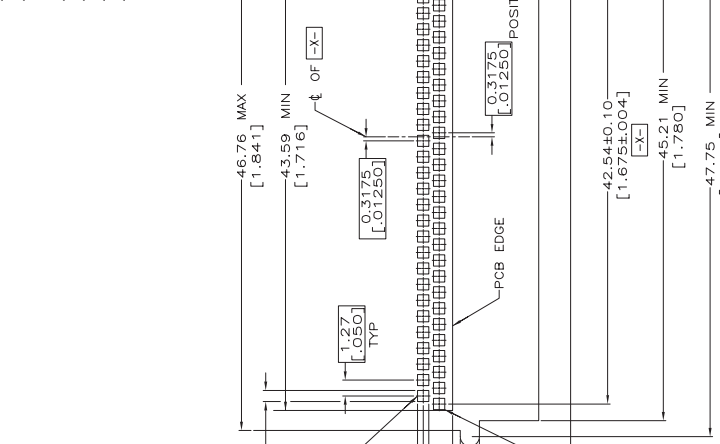


REVISIONS  
 DATE  
 BY  
 DESCRIPTION  
 02-14-05 LV JG  
 RELEASED PER EC 0513-0006-05

HOUSING: LCP, GLASS FILLED, COLOR: BLACK.  
 CONTACTS: BERYLLIUM COPPER.  
 DIMENSION IN REFERENCE TO LOWEST POINT OF EACH LEAD.  
 4. POINT OF CONTACT 2.3[.091] REF FROM MATING FACE.  
 APPLIES TO ALL SOLDER TAILS.  
 PACKAGED IN 56mm WIDE TAPE AND PLASTIC REEL.  
 PACKAGED IN 72mm WIDE TAPE AND PLASTIC REEL.  
 CONTACTS: 0.00076[.000030] MINIMUM GOLD ON MATING AREA, 0.00064[.000025] MINIMUM SEMI-BRIGHT NICKEL TIN ON SOLDER TAIL, ALL OVER 0.00127 [0.00050] MINIMUM WHITE NICKEL.



COPY RIGHT 2005  
 TYCO ELECTRONICS CORP  
 ALL RIGHTS RESERVED

VIEW Z - Z  
 SCALE 40:1

THIS DRAWING IS A CONTROLLED DOCUMENT.

DESIGNER	DATE	REV	BY
W. WALKLEY	02-14-05	1	LV
APPROVER	DATE	REV	BY
W. WALKLEY	02-14-05	1	LV
DATE	REV	BY	DESCRIPTION
02-14-05	1	LV	RELEASED FOR FABRICATION

CUSTOMER DRAWING: 100779-5146835

PACKAGING	5146835-3
PART NUMBER	5146835-4

Tyco Electronics Corporation  
 Harrisburg, PA 17105-3608

RECEPTACLE ASSEMBLY, SURFACE MOUNT,  
 68 POSITION, 0.15mm/.006in OFFSET,  
 MEMORY CARD