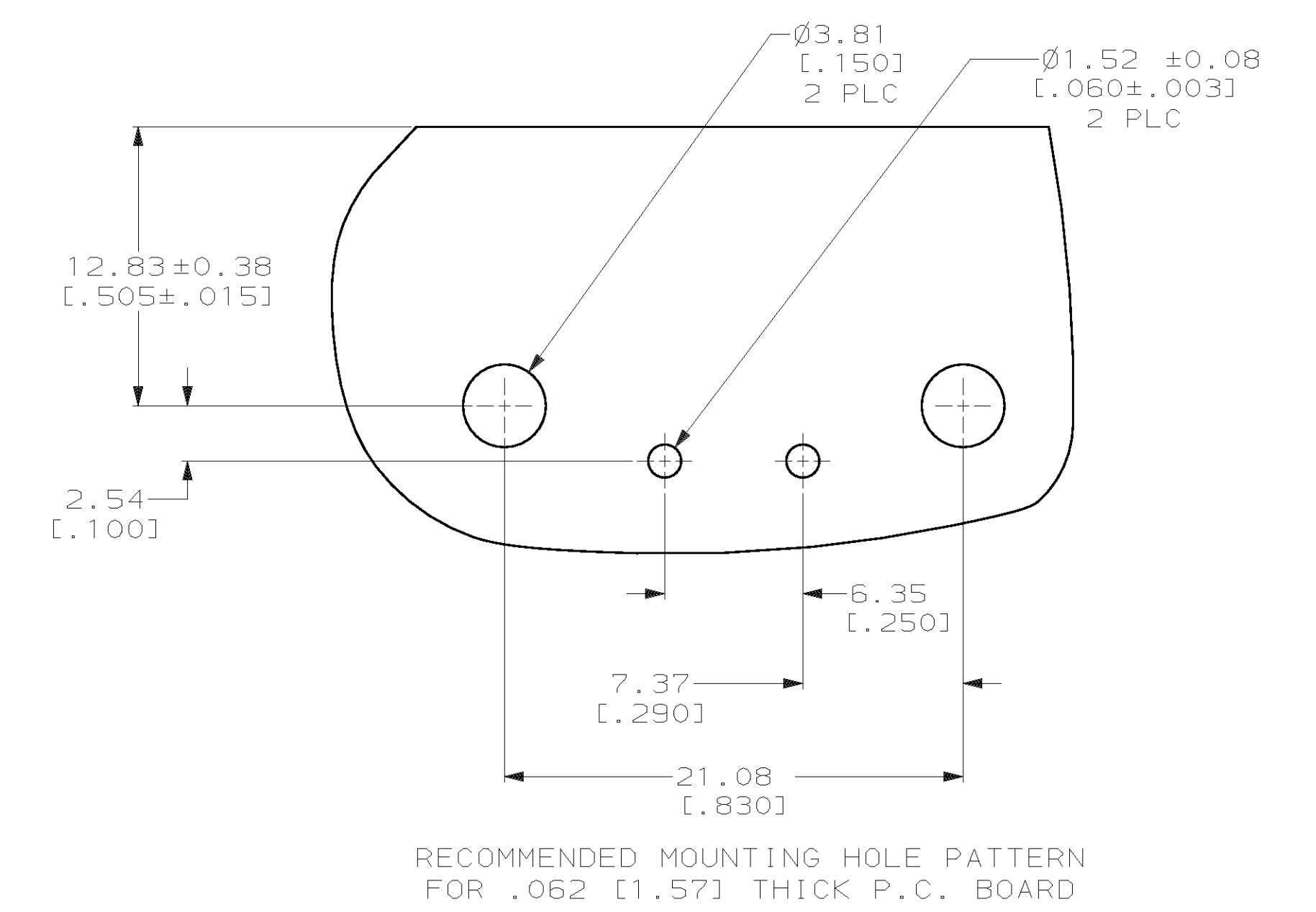
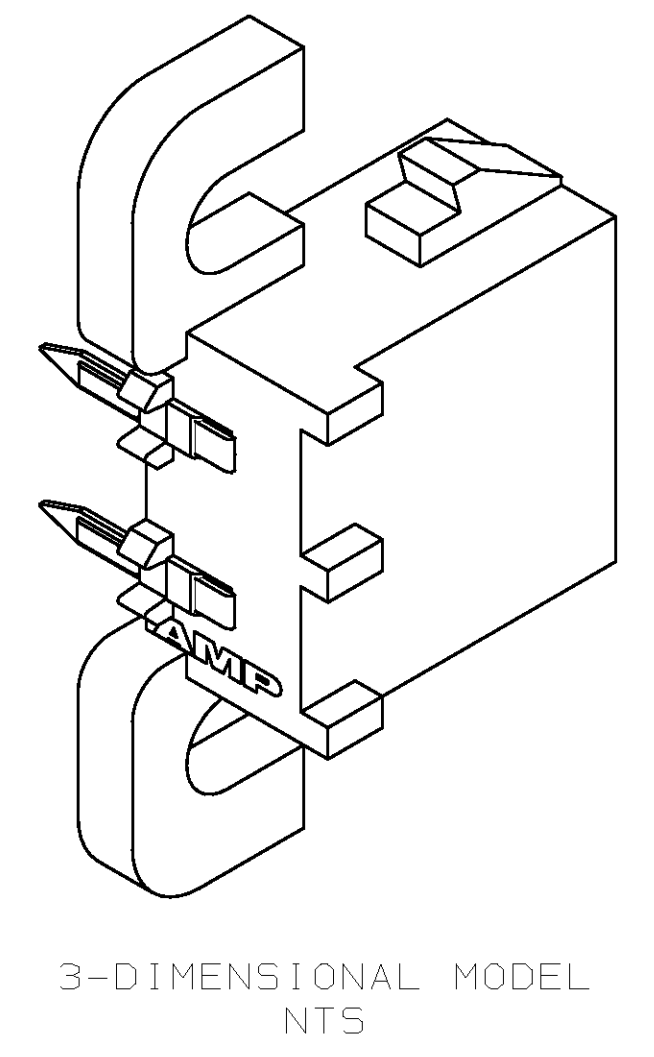
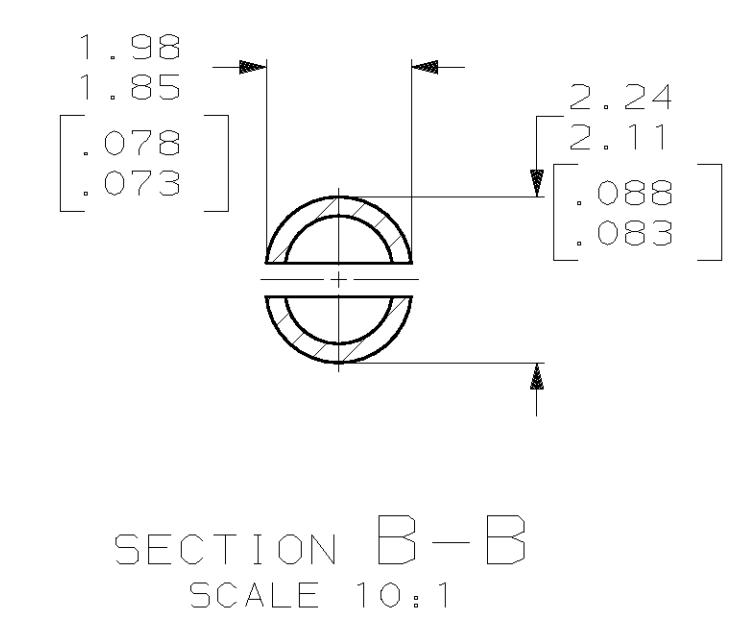
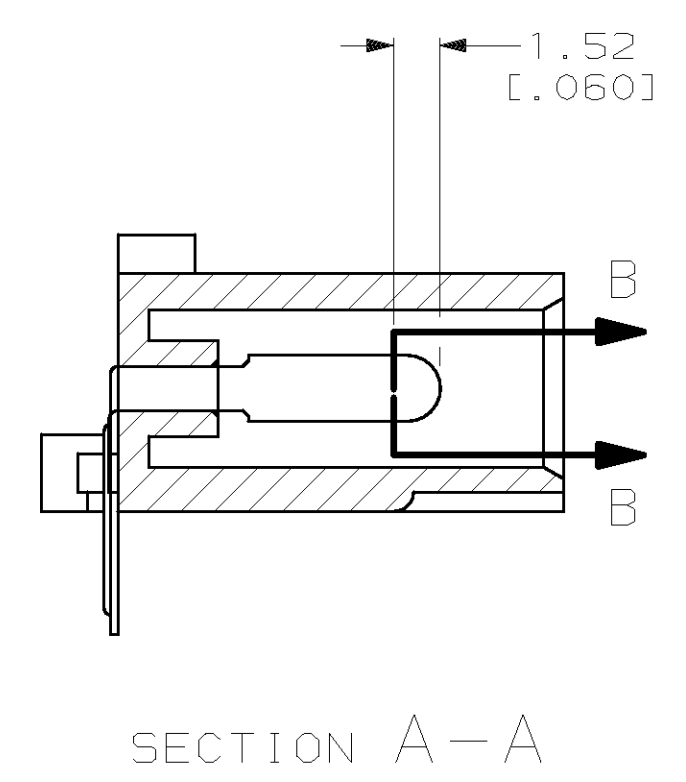
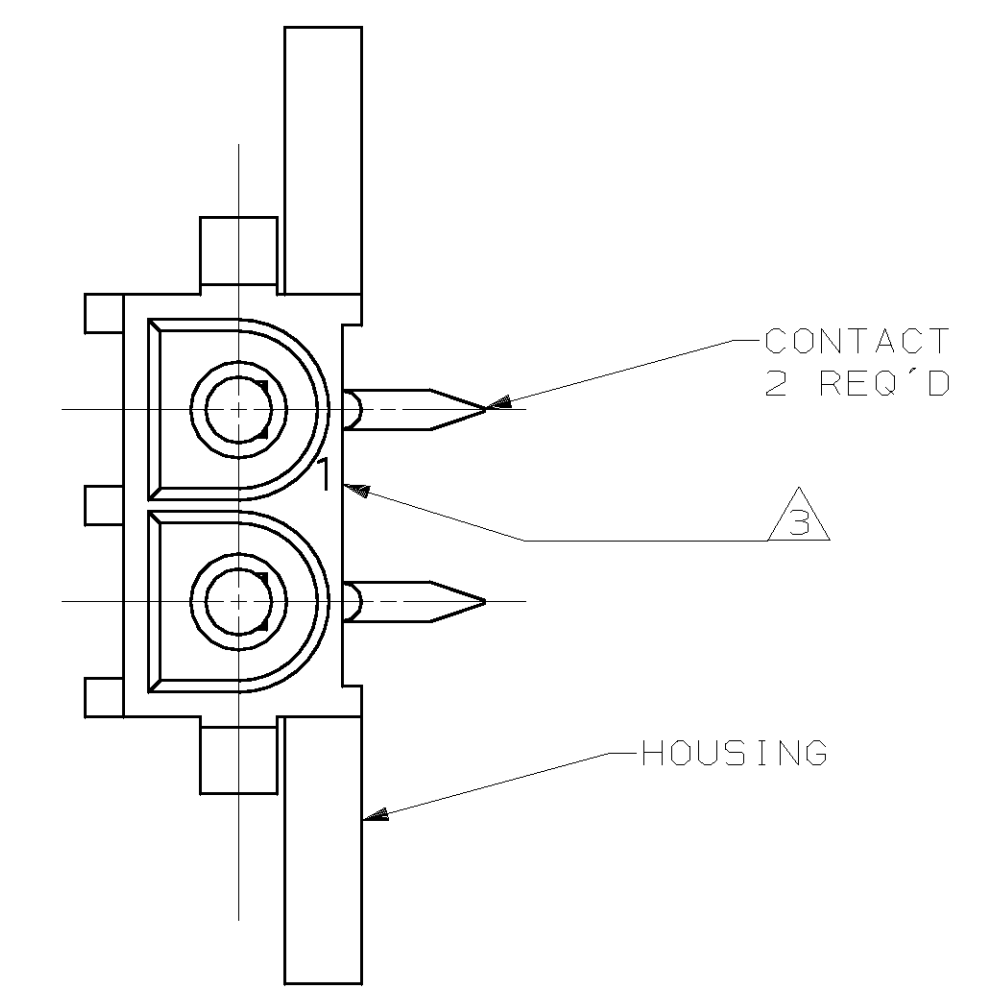
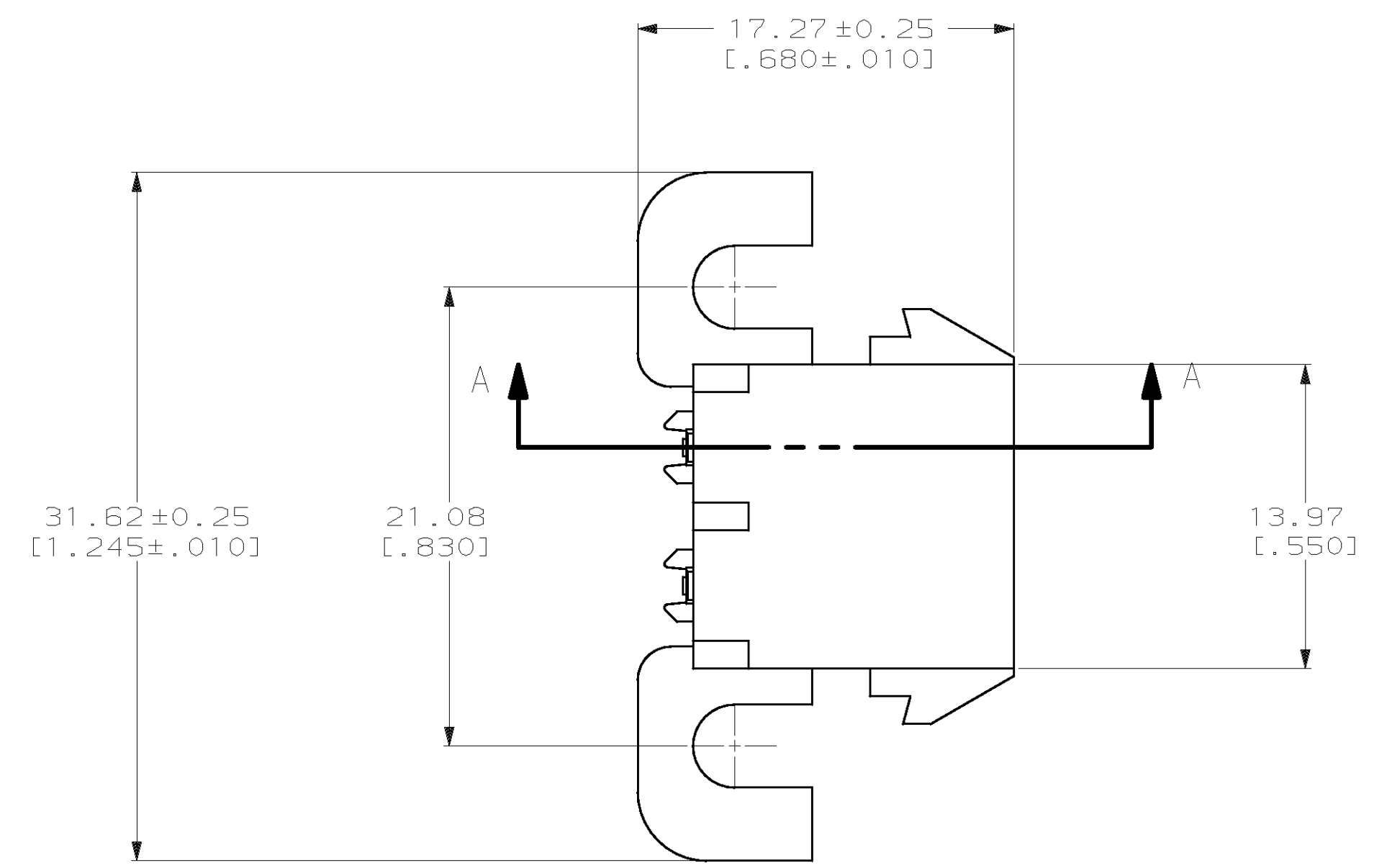
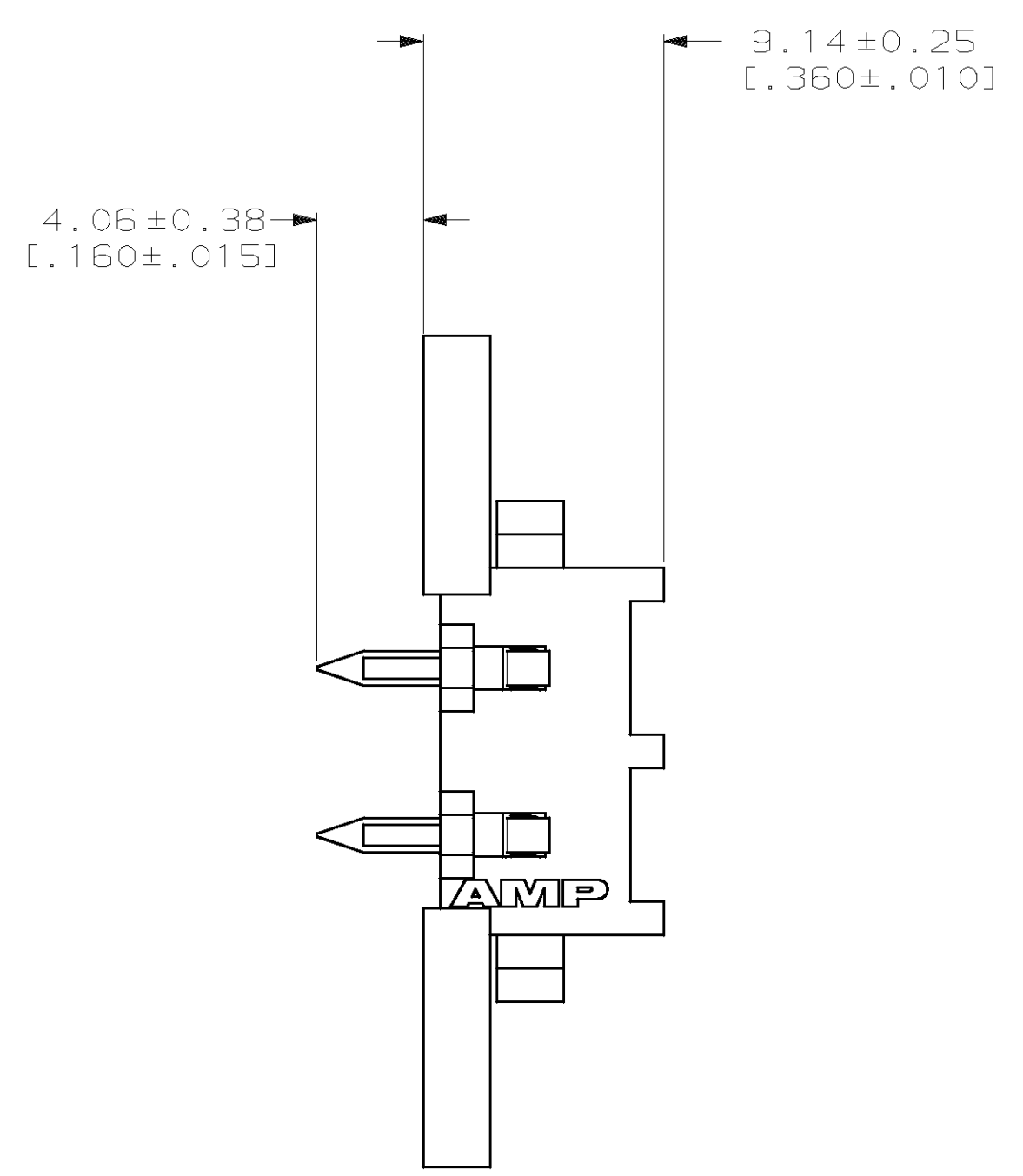


LOC		DIST		P		F		ZONE		LTR		REVISIONS		DATE	APPD	
CM	53												C	REV PER EC 061B-0127-98	6-24-98	BL R5

- PARTS COMPLY WITH AMP SOLDERABILITY SPECIFICATION 109-11-5.
- DIMENSIONS IN BRACKETS ARE IN INCHES.
- CIRCUIT IDENTIFICATION CHARACTERS ARE ADJACENT TO THE INDICATED CAVITIES, BUT LOCATION AND ORIENTATION MAY DIFFER FROM PRINT.



METRIC

THIS DRAWING IS A CONTROLLED DOCUMENT FOR AMP INCORPORATED. IT IS SUBJECT TO CHANGE AND THE CONTROLLING ENGINEERING ORGANIZATION SHOULD BE CONTACTED FOR THE LATEST REVISION.

PHOS BRONZE, PRE-TIN		NYLON UL94V-0		770994-1	
CONTACT		HOUSING		PART NO	
DR 8-17-92 B. LEWIS				AMP AMP Incorporated Harrisburg, PA 17105-3608	
CHK 8-17-92 R. SWING					
APPD 8-27-92 G. BROWN				NAME PIN HEADER ASSEMBLY, RIGHT ANGLE MOUNT, 2 POSITION, UNIVERSAL MATE-N-LOK™	
APPD 8-27-92 G. BROWN					
SEE TABLE	PRODUCT SPEC			SIZE	CAGE CODE
SEE TABLE	APPLICATION SPEC			D	00779
	WEIGHT			SCALE	DRAWING NO
				4:1	C-770994
					SHEET
					1 OF 1